

# BRIGHT SUMMER BOUQUET

The great outdoors is filled with inspiring images to paint or sketch. Take your art studio outside and create a colorful close-up of your favorite flower.



## Artist's Tools

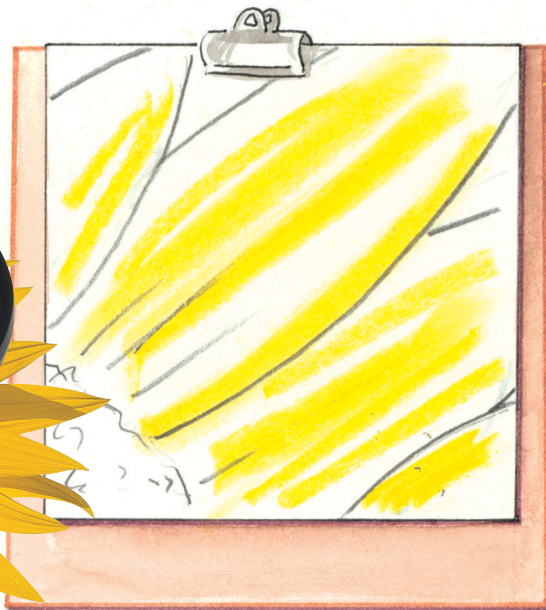
- flowers
- magnifying glass
- drawing board or easel
- paper, pencil and eraser
- chalk pastels
- tissue

**1** Examine each part of your flower with a magnifying glass. How many shapes can you see? How many colors? What's the lightest color? What's the darkest color? Is anything living inside?

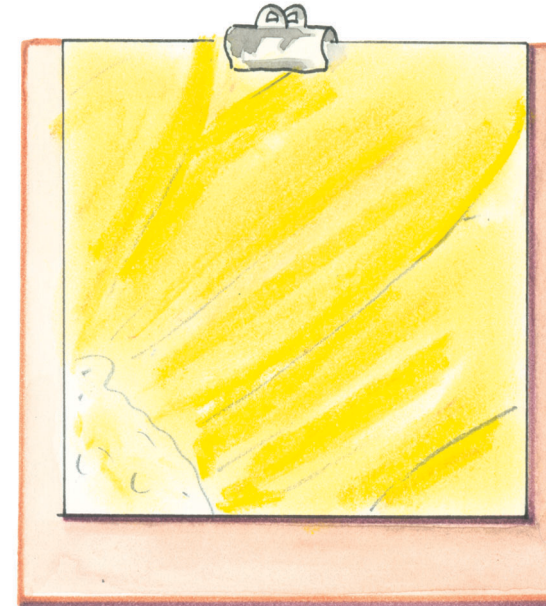


**2** Choose a small section of your flower and lightly sketch the shapes you see.

**3** Start with the chalk color that's closest to the lightest color in your flower. Press firmly, following the forms and shapes of your sketch.



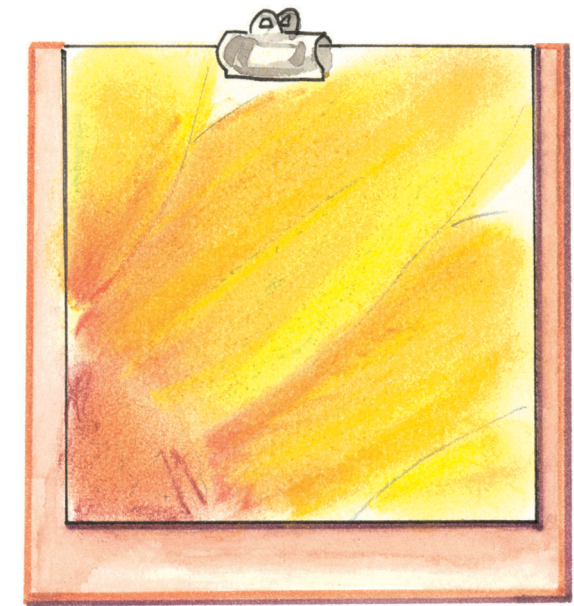
**4** Using a tissue, blend your chalk lines together. Be sure to follow the shapes of your flower.



**6** Add details last, such as bright yellow stamens in the center, veins in the petals or bold, beautiful bugs!



**5** Continue adding and blending the colors of your flower, working from lightest to darkest.



**7** Make several studies of each flower part and put them together to create one enormous image!

